

Consonance

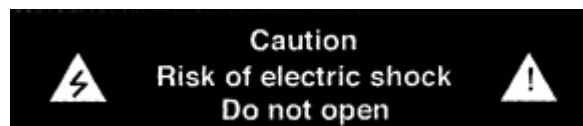
Droplet CDP5.0 D

24Bit 192KHz Digital input

SAFETY INSTRUCTION

To avoid personal injury or damage to equipment, please ensure that you read this manual in its entirety before attempting to operate the equipment. Please retain this manual for future reference.

TO PREVENT THE RISK OF ELECTRIC SHOCK, DO NOT UNDER ANY CIRCUMSTANCES REMOVE ANY PARTS OF THE EQUIPMENT COVER. THERE ARE NO USER SERVICEABLE PARTS INSIDE. ALL SERVICING MUST BE CARRIED OUT BY QUALIFIED SERVICE PERSONNEL.



This icon marks a presence of un-insulated "dangerous voltage" within the product's enclosure that may be of sufficient magnitude to constitute a risk of electric shock to persons.



This icon marks important operating, maintenance and service information that should be read to prevent possible personal injury

WARNINGS



Do Not Disassemble

Do not attempt to service the equipment beyond that described in this manual. Touching the equipment's internal parts could result in severe personal injury. All other servicing or problems as listed below should be referred to qualified Consonance service technicians:

- The power supply cord or plug has been damaged
- Objects have fallen or liquid has been spilled into the equipment
- The equipment does not appear to function normally or exhibits a marked change in performance
- The equipment has been dropped or the enclosure damaged

Do not under any circumstances allow anyone to modify your Consonance equipment without first checking with Opera Audio, your dealer, or your distributor. Unauthorized modifications will invalidate your guarantee.

**Power Source**

The equipment should be connected to a power supply only of the type described in this manual or as marked on the equipment.

**Grounding or Polarization**

Power supply cords should be routed so that they are not likely to be walked on or pinched by items placed upon or against them, paying particular attention to cords and plugs, convenience receptacles, and the point where they exit from the amplifier.

**Ventilation**

The equipment should be situated so that its location or position does not interfere with its proper ventilation.

1. The equipment must not be placed on bed, sofa, or similar surfaces, that may block the ventilation openings,
2. The equipment must not be placed in a built-in installation, such as a bookcase or cabinet that may impede the flow of air.
3. The equipment should be situated away from heat sources such as radiators, heat register, stoves, or other electronic appliances that produce heat. This equipment is not intended for commercial use.

**Water and Moisture**

The equipment should not be used near water, e.g., near a bathtub, washbowl, kitchen sink, laundry tub, in a wet basement, or near a swimming pool etc. Similarly, do not place objects filled with liquid, such as vases on top of the equipment.

**Lighting**

Consonance hi-fi system can be damaged by lightning. Power amplifiers are particularly at risk and therefore should be turned off when there is risk of lightning strike. For complete protection all mains plugs and any aerial cables should be disconnected when not in use.

**Power Lines**

In case of connecting a tuner, an outdoor antenna should be located away from power lines. If an outside antenna is connected to the system, be sure the antenna is grounded so as to provide some protection against voltage surges and built up of static charges.

**Cleaning**

Never clean with furniture polish, benzene, or volatile liquids. Dust periodically with a clean, soft paint brush. Fingerprints can be removed with a moist polishing cloth.

Table of Contents

SAFETY INSTRUCTION

1.	INTRODUCTION	4
2.	UNPACKING & SET-UP	4
3.	GENERAL WARNINGS	4
4.	TROUBLESHOOTING GUIDE	4
5.	OPERATING TIPS	
5		
6.	REMOTE CONTROL	
7		
7.	TECHNICAL SPECIFICATION	9
8.	WARRANTY	10

Introduction

Thank you for the purchase of the Droplet CDP5.0D High End CD-player. Opera Audio welcomes you to the growing number of discerning audiophiles who own Opera Audio products. This manual has been prepared to help you to maximize your enjoyment of the performance and features of your new Consonance equipment. Please study this manual carefully and become acquainted with all the features, operation and capabilities of your new Consonance equipment. Should you have any questions, or desire information on other Opera Audio products, please contact your local Opera dealer.

Unpacking & Set-up

Unpacking

Before any Opera Audio product leaves the factory it is carefully inspected for physical imperfections as a routine part of Opera Audio's stringent systematic quality control. After you have unpacked the equipment, carefully inspect for any physical damage. Save the shipping carton and packing materials as they are essential for future use to reduce the possibility of transportation damage.

Set-up

Check Equipment Voltage

Ensure that the operating voltage of the amplifier, check the shipping carton label and/or owners manual, conforms to the delivery voltage of your local power supply (i.e. 240V / 230V / 220V / 115V / 100V AC dependent on country).

General Warnings

Every piece of Consonance equipment is designed to produce the finest sound quality that can be achieved, by avoiding compromise wherever possible. This can lead to circumstances that may be unfamiliar to the equipment owner. The material that follows contains advice specifically related to Consonance equipment as well as more general warning about the use of domestic audio products.

Please read it carefully:

The transformers in Consonance amplifiers and power supplies may sometimes make a mechanical noise caused by distortion of the mains waveform. Consonance transformers are large in size and have heavy gauge secondary windings making them relatively sensitive to such distortion. A separate mains circuit for your hi-fi system may reduce the effect while also giving an overall improvement in sound quality. It may be necessary however to take account of mechanical transformer noise when placing your equipment.

In some circumstances, depending on where you live and the grounding arrangements in your home, you may experience radio frequency interference. Controls on broadcasting in some territories allow very high levels of radio frequency radiation and both the choice and exact placement of equipment may be critical. If there is a known problem in your locality it is advisable to arrange for a home demonstration before purchase to ensure that your selected Consonance equipment can be operated normally. Susceptibility to radio frequency interference is related to the wide internal bandwidth necessary for high sound quality. Systems incorporating moving coil phono preamplifiers and active crossovers are more likely to suffer.

Troubleshooting Guide

Equipment problem could also be caused by fault in any part of the system or its installation. As Legal consumer protection varies from country to country, you should always first consult the local dealer for

any technical problems that you may experience. Please contact your local distributor or Opera Audio at the address in the back of this manual for any difficulties that cannot be resolved.

Certain Consonance equipment is made in special versions for different territories as a result it is impracticable to arrange international guarantees. Please establish appropriate guarantee arrangements with your own dealer at the time of sale. We are always available to offer help and advice. It is essential that repairs and updates are only carried out by authorized Consonance dealer or Opera Audio factory. As many Consonance components are custom made and specially matched, the replacement parts must be ordered through Opera Audio or its representative. Our dealer will have all relevant information about the service in your area and will ensure that you equipment is serviced without delay.

If for some reason, there are no service facilities available in your area, please ship the equipment to the address listed at the back of the manual.

Please note that you are responsible for all shipping charges, insurance, and re-importation to your country, and duty arrangements.

When shipping a product back to factory for service, always include the following:

- Sales slip or other proof of purchase if repair is claimed under warranty.
- A proforma invoice with value of the goods, stating that the amplifier is returned to china for repair.
- An accompanying letter describing faults, symptoms or problems with the amplifier.
- Always ship the
- amplifier in its original carton and packaging material to prevent damage in transit.

Opera Audio will not accept responsibility for any damage caused in transit, no matter whatever caused.

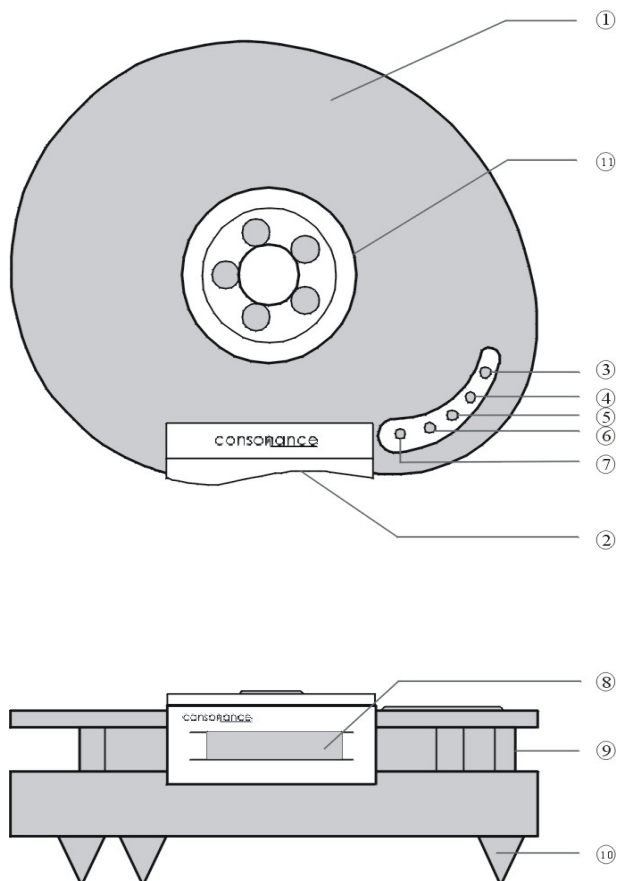
GENERAL TIPS

The CD player has only five knobs. The knob on the right hand side of the top cover, It has 5 function.

1. Top cover
2. Front panel
3. Power on / off

The CD-player is switched. A flashing " - - - -" blue light in the display indicates that power has been switched. By the same position of this knob one more time the power is switched off.

Note: It takes about 1 minute for the 6H30 tube to reach its normal operating point, and only slight sonic improvement will be noticed after 5 minutes.



4. Next track

Pushing the next track button makes the player jump to the next track on the CD. For every time this button is pushed the player will move one track forward. The player will automatically start playing from the beginning of the selected track each time this button is pushed.

5. Previous track

Pushing the prev. track button makes the player jump to the beginning of the track that is playing. For every time this button is pushed the track playing will move one track backwards. The player will automatically start playing from the beginning of the selected track each time this button is pushed.

6. Stop

Pushing the stop button makes the player stop playing the CD.

7. Play/Pause

Pushing the play button makes the player start playing.

If the play button is pushed when a track is playing the player will go into pause mode. One more push at the button and the player will start playing again from the same position on the CD. The pause function is indicated by the display flashing the track and time when the pause was selected.

8. Display

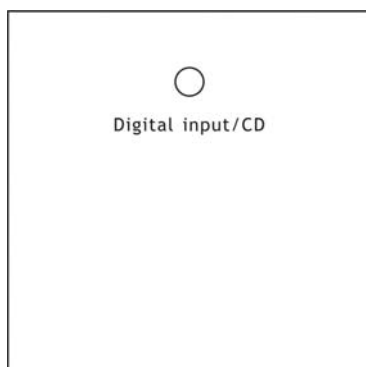
9. Chassis

10. Feet

11. loader cover

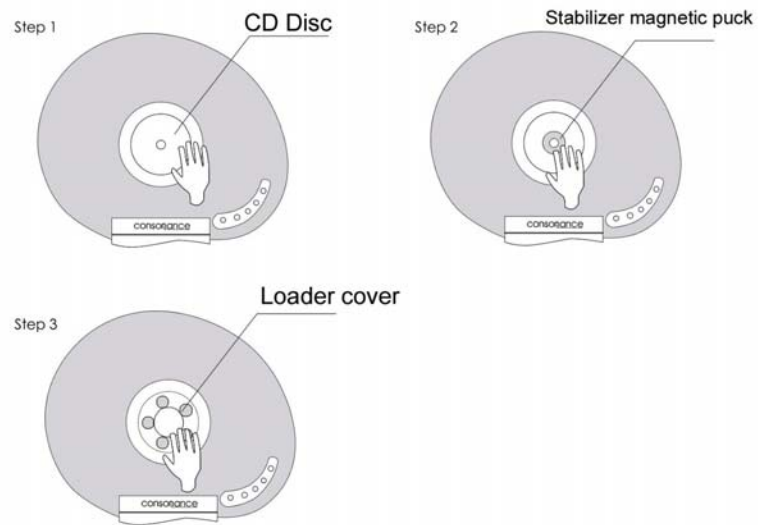
Only the loader cover is covered, the CD player start work.

12. Stabilizer magnetic puck



The knob on the back can change the CD and Digital input function.

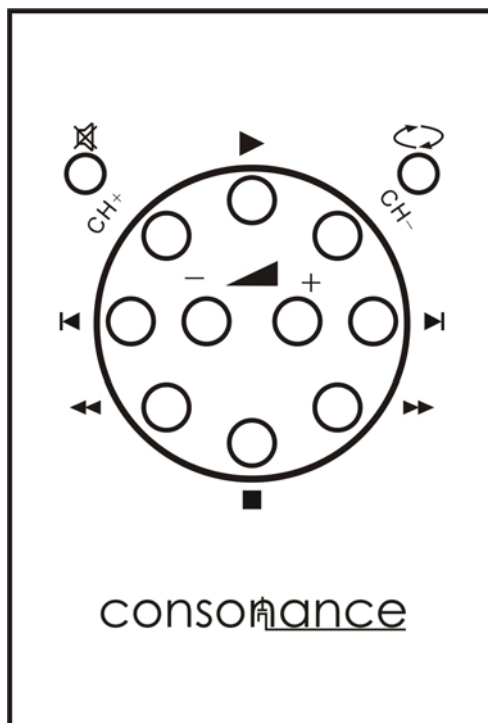
1. Put the CD Disc into CD Player.
2. Set the Stabilizer magnetic puck on the CD disc.
3. Cover.



REMOTE CONTROL

The Consonance CD player can be controlled by remote control. Like other Hi-End products, the number of buttons on the remote is kept to a minimum. The remote control uses two 1.5-volt LR03 AAA batteries.

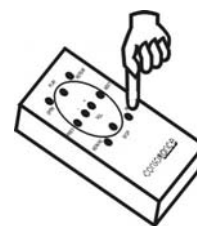
Additional functions available on the remote control



By using the Consonance Remote control the functions search (▶▶, ◀◀) and ↻ can be selected.

fast forward

Searching fast forward is selected by holding down the ►► button on the remote control. The search speed will start slow and will increase to high after some seconds.

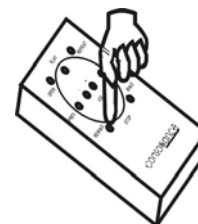


fast backward

Searching fast backwards is selected by holding down the ◀◀ button on the remote control. The search speed will start slow and will increase to high after some seconds.

Repeat CD

To repeat the complete CD, press the ↻ button once. “REP cd” will be displayed on the screen.



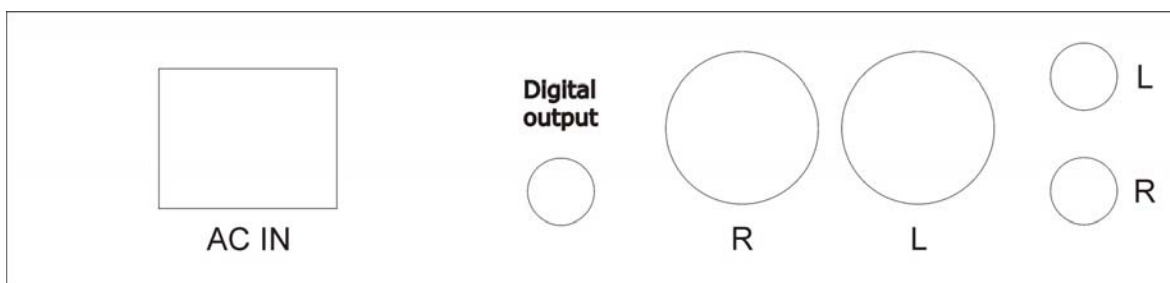
Repeat track

To repeat the track playing, press the ↻ button twice. “REP tr” will be displayed for two seconds on the screen.

Cancel repeat

To cancel repeat, press the ↻ button third.

From left to right the connectors are :



AC Power connection 240V / 230V / 220V / 115V / 100V AC dependent on country.

Digital output Phono/RCA

Balanced signal outputs XLR right/left

Unbalanced outputs Phono/RCA right/left

We recommend to connect signal cables to the CD-player when the CD-player and all the other units of the audio system is switched off.

The CD-player has two types of analog audio outputs: unbalanced audio signal with RCA plugs (phono plugs) and true balanced audio signal with XLR plugs (pin 2 is positive phase, pin 3 is negative phase and pin 1 is chassis earth).

We will recommend using the balanced XLR outputs from the CD-player, as these will have the absolute highest level of sound quality.

The CD-player has got one RCA standard SPDIF digital audio output. Digital signal level is 0.5Vpp when terminated in 75 ohm load. This is the standard load impedance of external DAC's and other recording equipment.



The CD-player has got one RCA standard SPDIF digital audio input.

TECHNICAL SPECIFICATIONS

Consonance Droplet CDP5.0D High End CD-player

Specifications:

DAC resolution	24bit 192KHz multilevel sigma-delta with Asynchronous upsampling
Clock Jitter	Less than 14ps directly distributed to DAC
0dBFS signal output	2.3V RMS (RCA) 4.6V RMS (XLR)
Output Terminals	Gold plated Tube RCA unbalanced and gold plated XLR balanced
Frequency response	Less than +/- 0.1 dB deviation 20Hz-20kHz
Phase response	Less than 2 degrees deviation 20Hz-20kHz
Signal-to-noise ratio	More than 115dB (XLR Vacuum tube output)
Signal-to-noise ratio	More than 100dB (RCA Vacuum tube output)
Crosstalk	Less than -100dB
Distortion (XLR)	Less than 0.002%
Distortion (RCA)	Less than 0.015%
Intermodulation	Less than 0.002% (19kHz + 20kHz)
Remote Control	Philips RC-5 compatible IR system 36kHz modulation frequency
Vacuum tube	Sovtek 6H30 x2
Dimensions / Weight	51cm x 43cm x 14cm (HxWxD) / 30kg

Warranty

Opera audio guarantees each product manufactured by us to be free from defects in materials and workmanship under normal use. Our obligation under this warranty is limited to making good at our factory any part or parts thereof which shall, within 1 year after delivery to the original purchaser, be returned to us with transportation charges prepaid, and which an examination shall disclose to have been thus defective; this warranty being expressly in lieu of all other warranties expressed or implied and of all other obligations or liabilities on our part. This warranty shall not apply to any Opera audio product which shall have been repaired or altered outside of our factory in any way so as to affect its stability, nor which has been subject to misuse, negligence or accident. Warranties of the vacuum tubes are by the respective manufacturers, usually 90 days.

Please mail or e-mail the Registration Card to the address as follows:

The Opera Audio Co., Ltd.

No.2 JianXianQiaoLu
ChaoYang District
Beijing, China
Tel: 86 10 5978461
Fax: 86 10 59789465
support@opera-consonance.com
www.opera-consonance.com



Registration Card

Name
Address
City
State
Zip
Email
Telephone
Model
Serial Number
Purchase Date
Dealer